



KALARAHANGA(PATIA),  
BHUBANESWAR



RASHMI  
LIFESTYLE



**FRONT VIEW**





## WHERE LAVISHNESS MEETS AFFORDABILITY & RADIATES A LIFESTYLE OF TIMELESS ELEGANCE

**Shree Ganesh Buildcon Pvt. Ltd.** is a leading real estate developer of Odisha having many completed and ongoing projects (Flats, Duplex and Commercial) such as Royal Garden (Patia), Royal Tower (Damana), Rashmi Plaza (Link Road, Cuttack), Rashmi Elite (Aiginia), Rashmi Elegance (Aiginia), Rashmi Enclave (Kalinga Vihar), Rashmi Green (Sundarpada), Pramod Heights (Near Rasulgah) and Rashmi Homes (Patarapada), Bhubaneswar, and is continuously moving forward towards excellence by obtaining the latest technology innovation specialized services in the field of Real Estate Business in Odisha.

**Lifestyle Properties Pvt. Ltd.** is one of the most reliable Builders of Odisha, was founded with a vision to provide top quality residential & commercial premises to individuals as per their needs and aspirations, using the highest standards of the industry.

Lifestyle Green, Ratna Lifestyle, Akruti Lifestyle, Omm Sai Arcade, LDV Residency (Patia), Lifestyle Orchid (Chandaka), Nitya Pramod, PS Arcade (Damana), Gayatri Lifestyle, Prahallad Residency, Krishna Enclave (BJB Nagar), Harihar Lifestyle (Old Town), Dhauli Lifestyle, Sai Lifestyle (Uttara), Chinmaya Enclave (Nayapalli) are some of its prominent projects.



# RASHMI LIFESTYLE



## THE LANDMARKS

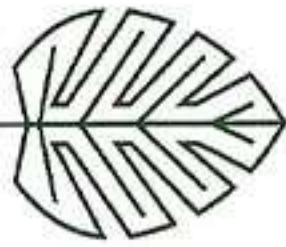
**School** - Sai International : 3 Km | KIIT International : 3 Km | ODM Public School : 3 Km

**Colleges** - KIIT : 3 Km | Patia Govt. College : 1 Km **Hospital** - KIIMS : 3 Km

**Mall** - Bigbozar : 2 Km **Offices** - Infosys : 3 Km | TCS : 3 Km | Mindtree : 3 Km

Railway Station : 13 Km | Airport : 16 Km | Petrol pump : 2 Km

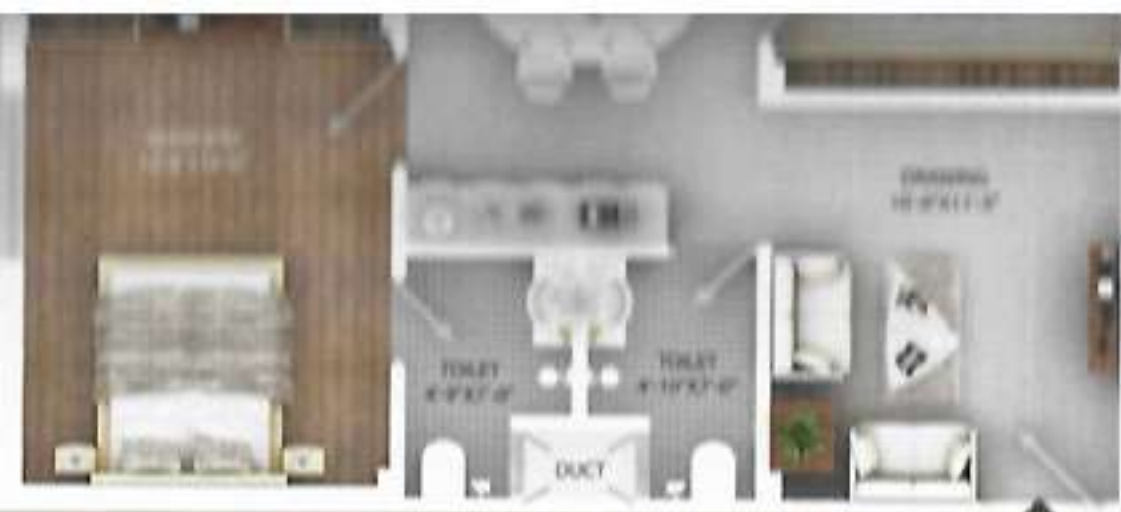




# SITE PLAN

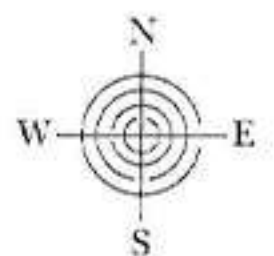






**A107 - A507**

**A106 - A506**



**TYPICAL 1ST TO 5TH FLOOR PLANS**



A102 - A502

A103 - A503



STAIRCASE  
10'-1" x 12'-0"



A105 - A505

A104 - A504





B110 - B510

B109 - B509

B108 - B508

FLAT	B101-B501	B102-B502	B103-B503	B104-B504	B105-B505	B106-B506	B107-B507	B108-B508	B109-B509	B110-B510
BHK	2	2	2	2	2	2	2	2	2	2
SBUA	1135 sqft	1124 sqft	1123 sqft	1125 sqft	1135 sqft	1141 sqft	1128 sqft	1131 sqft	1133 sqft	1136 sqft
CARPET AREA & BALCONY AREA	695 sqft & 45 sqft	695 sqft & 45 sqft	695 sqft & 45 sqft	695 sqft & 45 sqft	692 sqft & 45 sqft	695 sqft & 45 sqft	691 sqft & 45 sqft	691 sqft & 45 sqft	691 sqft & 45 sqft	691 sqft & 45 sqft



B103 - B503

B104 - B504

B105 - B505



VENTILATION SHAFT -3

VENTILATION SHAFT -4

VENTILATION SHAFT -5

5'0" WIDE CORRIDOR

B108-B508

B107-B507

B106-B506

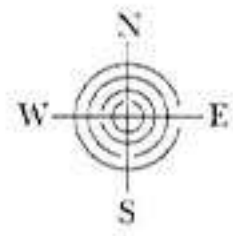






▲  
C109 - C409

▲  
C108 - C408



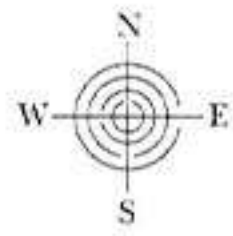
TYPICAL 1ST TO 4TH FLOOR PLANS





▲  
C109 - C409

▲  
C108 - C408



TYPICAL 1ST TO 4TH FLOOR PLANS



C103 - C403



C104 - C404



C105 - C405



5'0" WIDE CORRIDOR



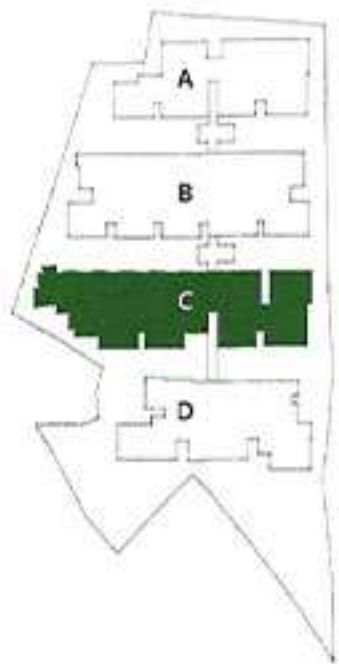
C107 - C407

C106 - C406



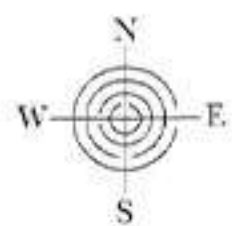


50' WIDE CORRIDOR



C509

C508



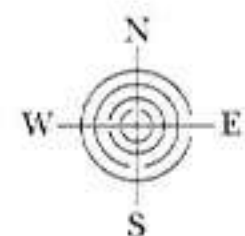
5TH FLOOR PLAN





D105 - D505

FLAT	D101-D501	D102-D502	D103-D503	D104-D504	D105-D505
BHK	3	3	3	3	3
SBUA	1610 sqft	1628 sqft	1707 sqft	1702 sqft	1709 sqft
CARPET AREA & BALCONY	1001 sqft & 48 sqft	1020 sqft & 45 sqft	1055 sqft & 55 sqft	1064 sqft & 55 sqft	1057 sqft & 55 sqft

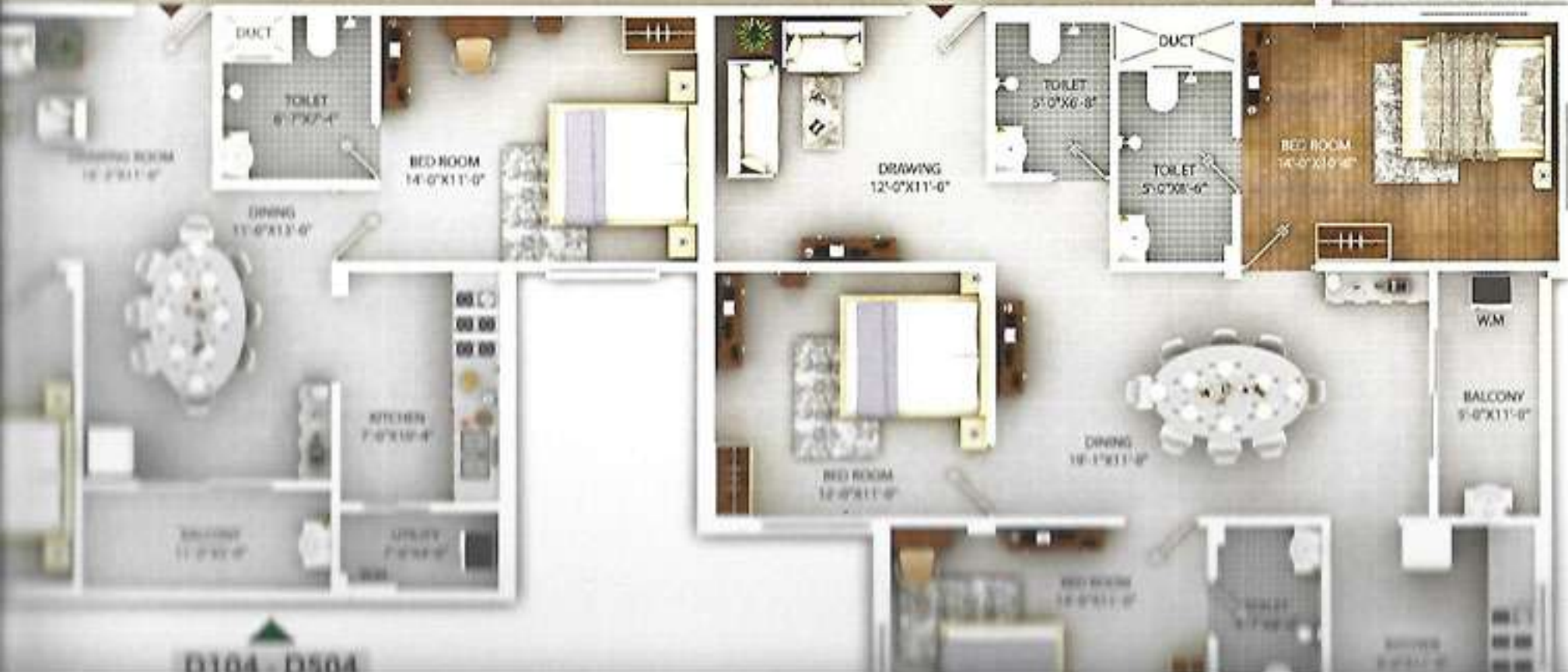




D102 - D502



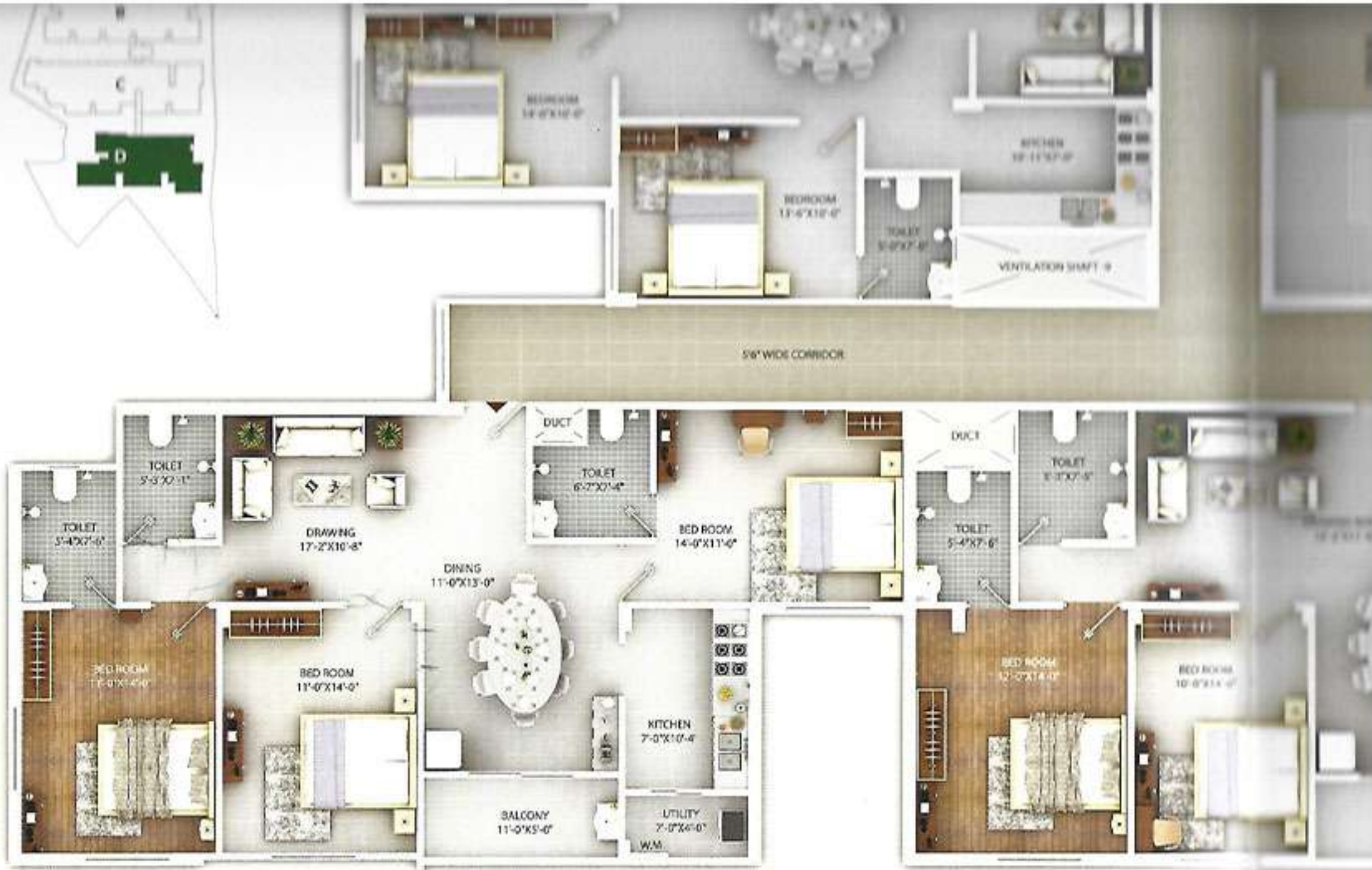
5'6" WIDE CORRIDOR



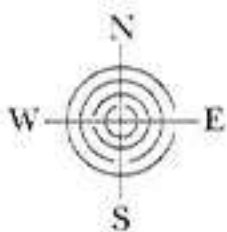
D104 - D504







D105 - D505



FLAT	D101-D501	D102-D502	D103-D503	D104-D504	D105-D505
BHK	3	3	3	3	3
SBUA	1610 sqft	1628 sqft	1707 sqft	1702 sqft	1709 sqft
CARPET AREA & BALCONY	1001 sqft & 48 sqft	1020 sqft & 45 sqft	1055 sqft & 55 sqft	1064 sqft & 55 sqft	1057 sqft & 55 sqft



2 BHK Flat



2 BHK Flat







3 BHK Flat



3 BHK Flat





Fully equipped AC Gym



CCTV Surveillance for Common Area



AC multipurpose Hall

## AMENITIES



Automated high speed passengers lifts



Intercom facilities



Round the clock security



24X7 water supply through submersible pump



100% power backup for common area and back up to all 6 ampere points for all residential flats



LED lighting through out campus



Sewage treatment plant



Landscape area & plantation





# PROMOTER



Shree Ganesh Buildcon Pvt. Ltd.  
(A member of CREDAI, Bhubaneswar)

Office at Plot No. : N-1/A-21, IRC Village  
Nayapalli, Bhubaneswar, P.O./P.S - Nayapalli  
Dist. - Khordha, (Odisha)

**FOR BOOKING CONTACT :**  
**8270357444/7978852306**

# CO-PROMOTER



LIFE **STYLE**  
PROPERTIES PVT. LTD